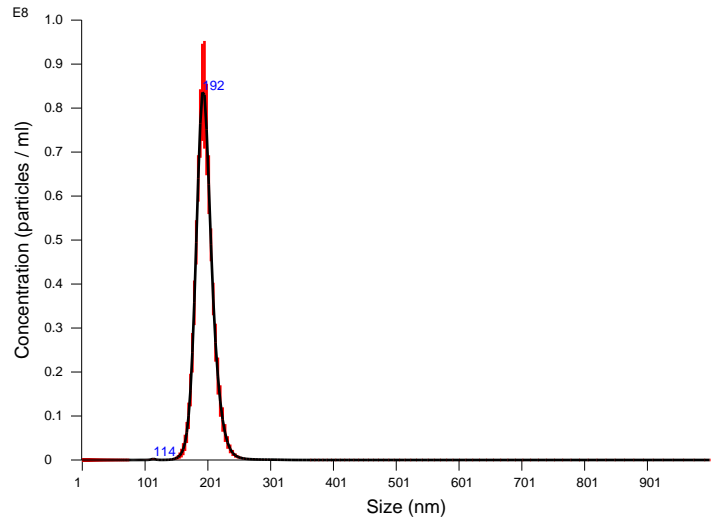


FTLA Concentration / Size graph for Experiment:
PV 2017-01-04 2017-01-04 2017-01-04 10-30-32



Averaged FTLA Concentration / Size for Experiment:
PV 2017-01-04 2017-01-04 2017-01-04 10-30-32
Error bars indicate + / - 1 standard error of the mean

Included Files

PV 2017-01-04 2017-01-04 2017-01-04 10-33-22
 PV 2017-01-04 2017-01-04 2017-01-04 10-34-27
 PV 2017-01-04 2017-01-04 2017-01-04 10-35-32
 PV 2017-01-04 2017-01-04 2017-01-04 10-36-37
 PV 2017-01-04 2017-01-04 2017-01-04 10-37-41

Details

NTA Version: NTA 3.1 Build 3.1.54
 Script Used: SOP Standard Measurement 10-30-32AM 04Jan2017.txt
 Time Captured: 10:30:32 04/01/2017
 Operator: EO
 Pre-treatment:
 Sample Name: SRM 2055 199-210 nm
 Diluent:
 Remarks: Particle Technology Labs PV 2017-01-04 SRM 2055
 EO

Capture Settings

Camera Type: sCMOS
 Camera Level: 7
 Slider Shutter: 165
 Slider Gain: 15
 FPS: 25.0
 Number of Frames: 1498
 Temperature: 25.0 - 25.0 °C
 Viscosity: (Water) 0.9 cP
 Dilution factor: Dilution not recorded
 Syringe Pump Speed: 30

Analysis Settings

Detect Threshold: 40
 Blur Size: Auto
 Max Jump Distance: Auto: 12.3 - 12.6 pix

Results

Stats: Merged Data

Mean: 195.0 nm
 Mode: 193.6 nm
 SD: 14.8 nm
 D10: 175.5 nm
 D50: 190.8 nm
 D90: 209.0 nm

Stats: Mean +/- Standard Error

Mean: 195.0 +/- 0.3 nm
 Mode: 193.7 +/- 1.1 nm
 SD: 14.6 +/- 1.4 nm
 D10: 175.4 +/- 1.9 nm
 D50: 190.8 +/- 0.7 nm
 D90: 208.9 +/- 2.0 nm
 Concentration: 7.71e+008 +/- 1.61e+007 particles/ml
 39.1 +/- 0.8 particles/frame
 39.1 +/- 0.8 centres/frame